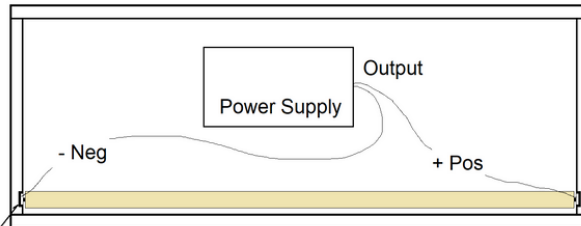
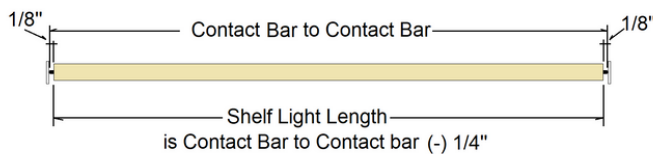
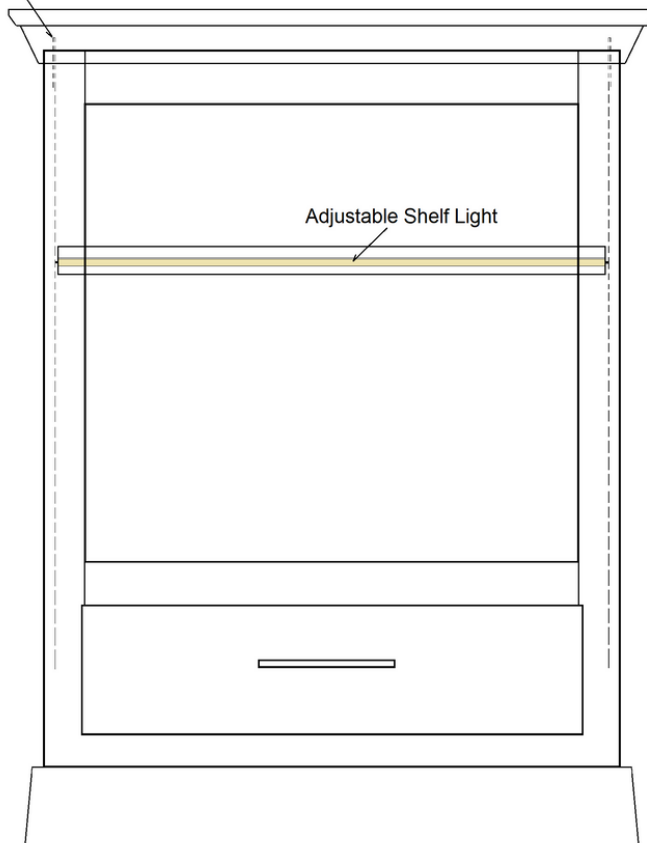


(Top View Example)



360 Brass Contact Bar

(Front View Example)



HOW IT WORKS:

360 Brass contact bars are recessed to flush mount in the sides of the cabinet/case by cabinet builder. 360 brass contact bars are available in 1/8" thick x 1/2" or 3/4" wide. Maximum length is 12 ft.

Contact bars should extend above or below visual cabinet spaces to allow hidden lead wire connections to the power supply. Power supplies should also be located in an accessible remote location.

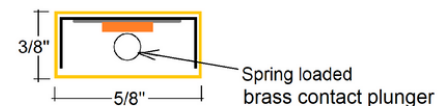
The Class 2 power supply's low voltage outputs connect to each of the contact bars with minimum 18awg insulated wire. Positive lead wire connects to one contact bar and negative lead wire connects to the other.

*96watts maximum between two contact bars for 24vdc shelf light systems.

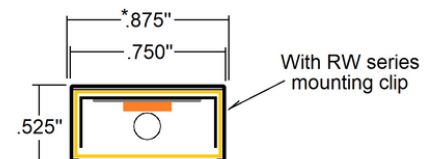
*60watts maximum between two contact bars for 12vdc shelf light systems.

Adjustable shelf lights can be mounted onto shelf surface using RW series mounting clips or flush mounted directly into horizontal trims or angled trims. (provided by cabinet maker). Prior to building the case, consider front stile interference for installation, adjusting and removal of the shelves.

Adjustable Shelf Light (Profile)



*Minimum allowance to snap over lens



*For best results, measure top shelf, middle shelf and bottom shelf of your cabinet to review shelf dimensions for constancy. If the dimensions are not all the same or not within 1/8", please order shelf lengths accordingly. For correct light lengths, measure contact bar to contact bar, minus 1/4". Contact movement on each end of the light is 1/4". This centers the contact plunger in its movable range.