



CUSTOM LOW VOLTAGE LIGHTING

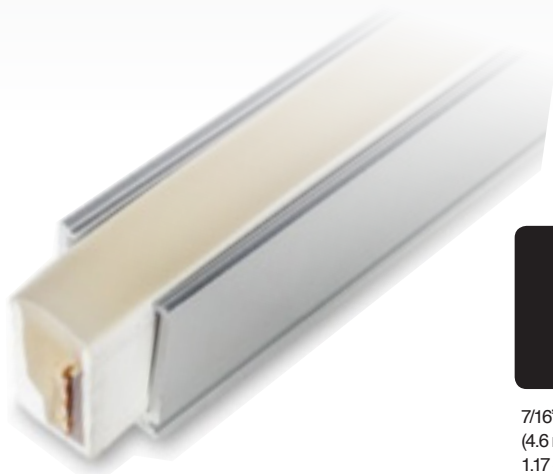
Neon Flex Light

SERIES **RA24**LED

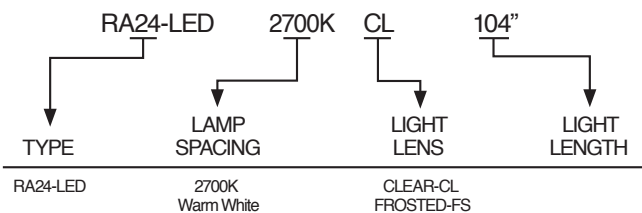
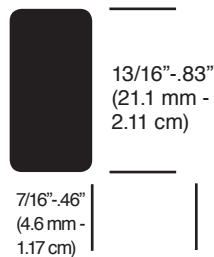
- IP68 Waterproof
- Warm White (2700K)
- 24v DC
 - 3.7 watts per foot
- Brightness: 125 lumens per foot
- Efficacy: 33.8 lumens per watt
- Low profile (.46" X .83") (7/16" X 13/16") (1.17 cm X 2.11 cm)
- Minimum bending diameter of 12 cm (4.72")
- 50,000 hour lifetime
- 3 year warranty

The RSL RA24 Neon Flex Light boasts a small profile that makes a big impact! The Neon Flex Light enables creative, inspiring and unique applications without the hassles of glass neon. Characteristics of the RA24 Neon Flex Light include the following: flexible, waterproof, energy efficient and durable.

FLEXIBLE & COLORFUL NEON:



End cap not shown



ORDER/SPECIFY BY CATALOG NUMBERS





CUSTOM LOW VOLTAGE LIGHTING

Neon Flex Light

SERIES **RA24LED**

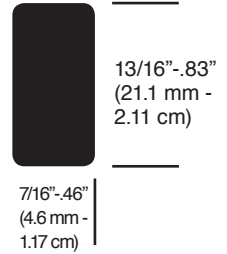
**24
VOLT**

Driver Power – Fixture Length Max | RSL's recommended fixture lengths/driver

3.4 Watts 1.9 Watts 1.5 Watts 0.60 Watts

DIM

48w. Driver	10'	n/a	n/a	n/a
96w. Driver	20'	n/a	n/a	n/a
288w. Driver (3-96w. drivers)	62'	n/a	n/a	n/a



TEMP (K)	COLOR	BRIGHTNESS LUMENS/FOOT	LED SPACING	CRI	POWER CONSUMPTION WATTS/FT.
2700K	WARM WHITE	125	16.7 mm/.66"	70+	3.7
4000K	NEUTRAL WHITE	122	16.7 mm/.66"	70+	3.7
6000K	DAYLIGHT WHITE	114	16.7 mm/.66"	70+	3.7

WAVE LENGTH	COLOR	BRIGHTNESS LUMENS/FOOT	LED SPACING	POWER CONSUMPTION WATTS/FT.
592	AMBER	16	16.7 mm/.66"	2.2
623/450	PINK	27	16.7 mm/.66"	3.7
630	RED	15	16.7 mm/.66"	2.2
465	BLUE	9	16.7 mm/.66"	3.7
610	ORANGE	22	16.7 mm/.66"	3.7
525	GREEN	46	16.7 mm/.66"	3.7



ROBERTS STEP-LITE SYSTEMS ■ 8100 SW 15th St. ■ Oklahoma City, OK 73128
 info@robertsstemplite.com ■ www.robertsstemplite.com
 405.728.4895 ■ 800.654.8268 ■ F: 405.728.4878

