



CUSTOM LOW VOLTAGE LIGHTING

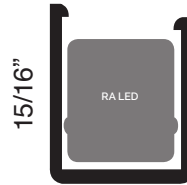
Mounting Clips



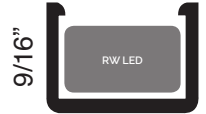
RNSERIES



* One side of RA clip is longer.



RASERIES



RWSERIES

Mechanical Fastening

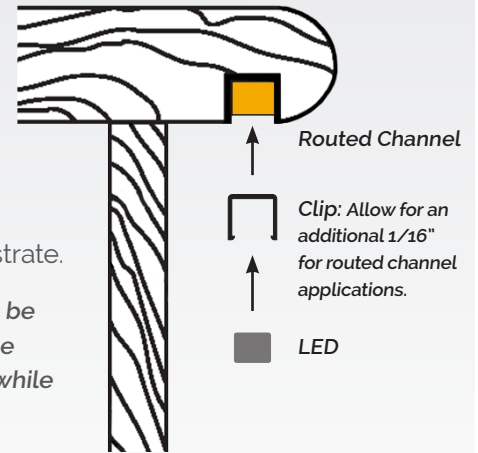
Recommended clip spacing:

- LED: 12" intervals
- Incandescent (EB and STD): 6" intervals

Please ensure that the mounting area is neat, clean, dry and free from any chemical residue. For best results, RSL recommends using the enclosed mounting clips. Mechanical fasteners should be used to secure the mounting clip to the substrate.

* Note that one mounting leg on the RA Clip is longer than the other: the long leg should be oriented to secure the side of the fixture with the raised lens surface. This often aids the process of lens removal. The longer leg is typical oriented to the riser side of the step while the shorter side is opposite. (The clips for RN and RW are equal lengths.)

* A #6 flat head screw is best suited for use with each style of mounting clip.

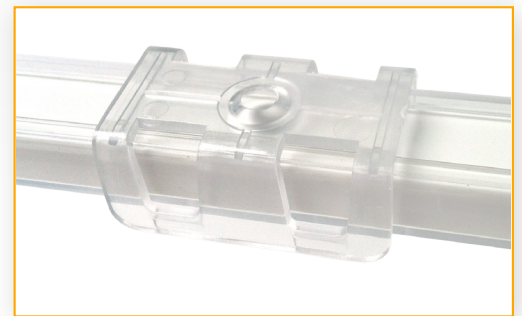


Adhesive Fastening

Recommended clip spacing:

- LED: 12" intervals
- Incandescent (EB and STD): 6" intervals

Please ensure that the mounting area is neat, clean, dry and free from any chemical residue. For best results, RSL recommends using a high quality construction adhesive or sealant to bond the fixture to the clip. The clip should be supported or clamped while the material cures- typically 24-36 hours.



* A #6 flat head screw is best suited for use with each style of mounting clip.

Tape Fastening

Recommended clip spacing:

- LED: 12" intervals
- Incandescent (EB and STD): 6" intervals

Please ensure that the mounting area is neat, clean, dry and free from any chemical residue. For best results, RSL recommends using a high quality VHB (Very High Bond) tape to secure the clip. Take care to cover the entire base of the clip to produce the best results.



ROBERTS STEP-LITE SYSTEMS ■ 8100 SW 15th St. ■ Oklahoma City, OK 73128
 info@robertsstemplite.com ■ www.robertsstemplite.com
 405.728.4895 ■ 800.654.8268 ■ F: 405.728.4878

